

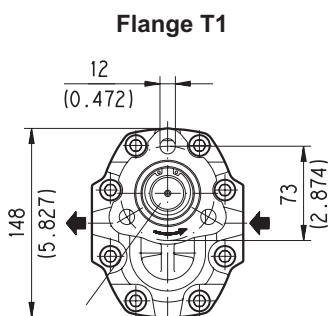
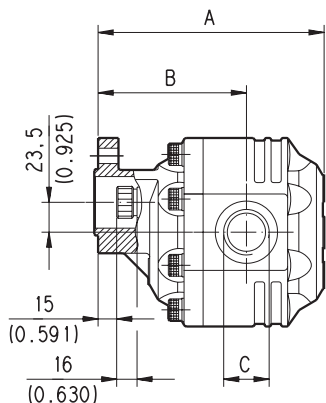
**FORMULA 30**

**HYDRAULIC GEAR PUMPS ITALIAN STANDARD**

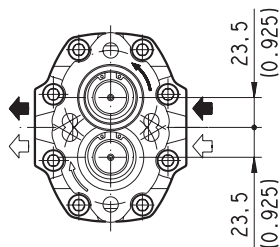
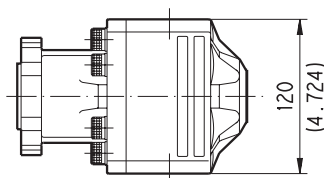
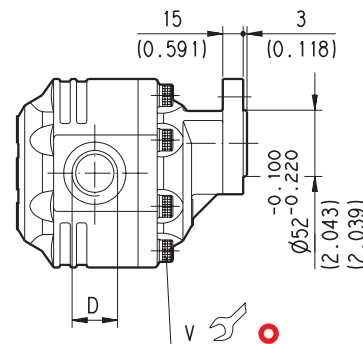
**19 T**

GAS STRAIGHT THREAD PORTS

British standard pipe parallel (55°) conforms to UNI - ISO 228

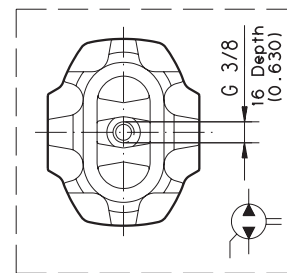


Shaft  
UNI 8953 6x21x25 S  
MAX. TORQUE 360 Nm  
(3186 lbf in)



**Flange T2**

Only for rotation S-D



D100-113/0805

<b>V</b> Tightening torque Nm (lbf in)
70 ±7 (558 ÷ 682)

Pump type			A	B	C	D	Mass			
			mm (in)	mm (in)	IN	OUT	kg (lbs)			
S D R B	0-19	T1	L GD/GD-N	150,5 (5.925)	100,5 (3.957)	G 1/2	G 1/2	9 (19.85)		
			L GE/GE-N	156,5 (6.161)	106,5 (4.193)	G 3/4	G 3/4	9,3 (20.51)		
				161,5 (6.358)	106,5 (4.193)			9,6 (21.17)		
				164,5 (6.476)	109,5 (4.311)			9,8 (21.61)		
				167,5 (6.594)	112,5 (4.429)			10 (22.05)		
		T2	L GF/GF-N	172,5 (6.791)	110,5 (4.350)	G 1	G 1	10,3 (22.71)		
			L GG/GF-N	178,5 (7.028)	116,5 (4.587)			10,7 (23.59)		
				186,5 (7.343)	117,5 (4.623)			10,9 (24.03)		
			L GG/GG-N	191,5 (7.539)	122,5 (4.823)			G 1 1/4	G 1 1/4	11 (24.26)
				217 (8.543)	136 (5.354)					11,5 (25.36)
233 (9.173)	152 (5.984)	12,3 (27.12)								

Rotation: S=left - D=right - R=reversible - B=reversible internal drain (•) Only available in T1 version.

How to order:

**FP 30•17 S0 - 19 T1 - L GD/GD - N**

01/08.05