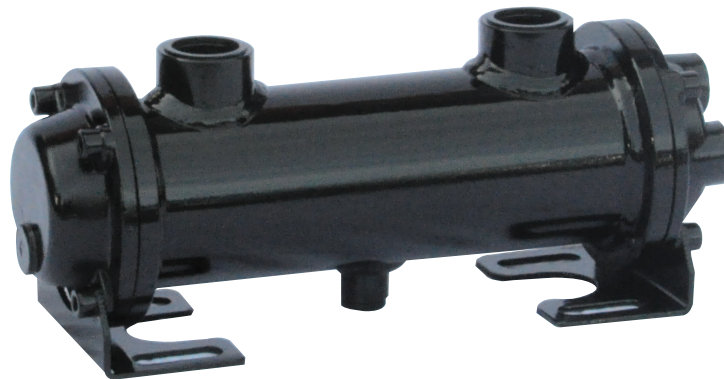


## Scambiatori di calore A FASCIO TUBIERO SHELL AND TUBE heat exchangers

SERIE **RF**  
**RF** SERIES



Gli scambiatori di calore della serie RF sono utilizzati per il raffreddamento di olio idraulico o di fluidi in genere.

### Esecuzione standard

- Mantello e piastre tubiere: acciaio al carbonio
- Coperchi: ghisa/acciaio al carbonio
- Fascio tubiero: rame
- Pressione di esercizio: 10 bar
- Pressione di collaudo: 15 bar

### Applicazioni

- Centraline idrauliche
- Macchine utensili
- Trasformatori
- Compressori
- Motori industriali

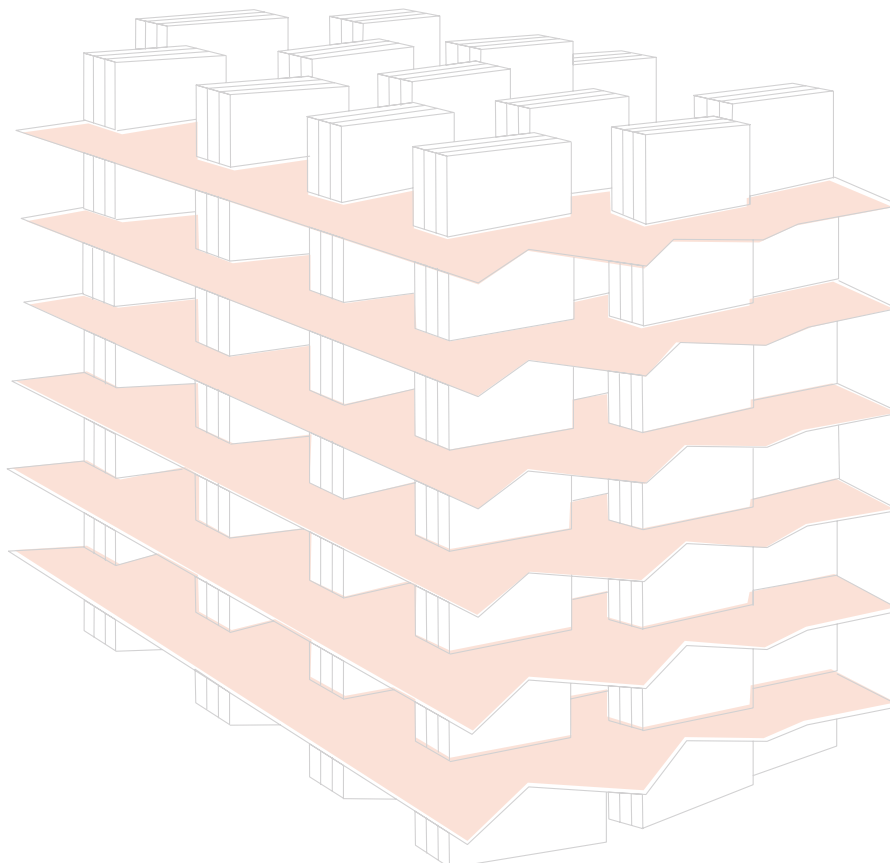
These exchangers are used to cooling hydraulic oil or other fluid.

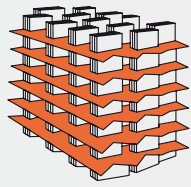
### Standard version

- Shell and tube plates: steel
- Heads: steel
- Tubes: copper
- Max working pressure: 10 bar
- Test pressure: 15 bar

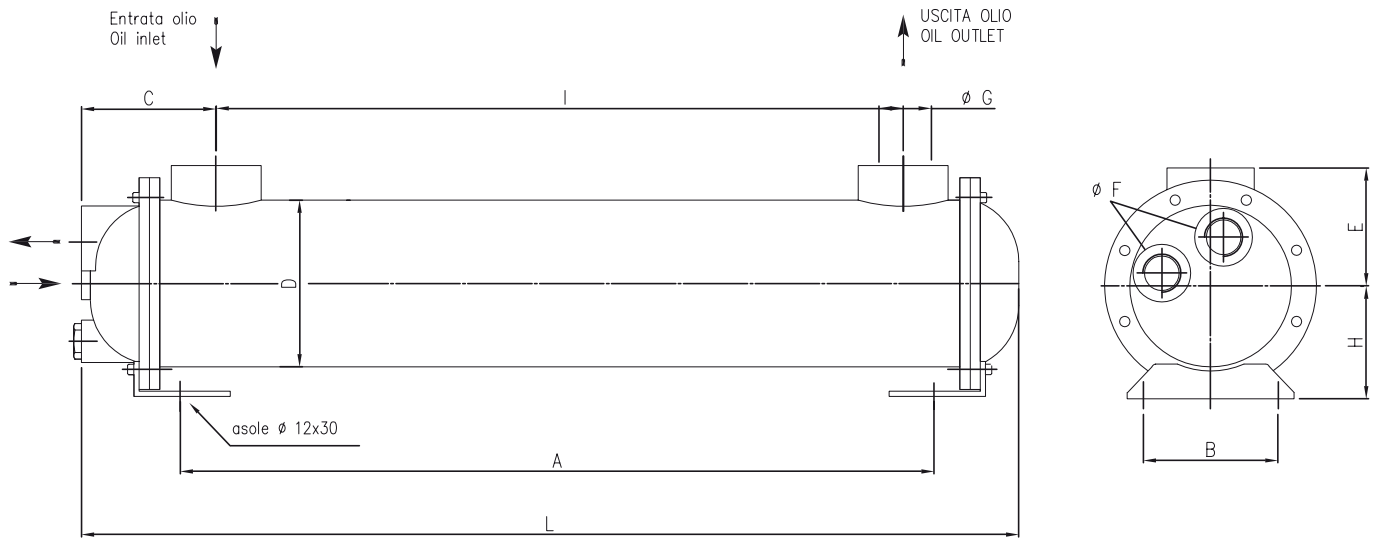
### Applications

- Hydraulic installations
- Machine tools
- Transformers
- Compressors
- Industrial engine





# Scambiatori di calore A FASCIO TUBIERO **SERIE RF** SHELL AND TUBE heat exchangers **RF series**



MODELLO MODEL	PORTATA OLIO OIL FLOW	KW	D	L	I	C	A	E	B	H	G	F/4V	F/2V
SCF60-40	10-80	1.5-4	60	400	270	65	/	/	/	/	1/2"	/	3/8"
SCF80-32	30-180	4-5.5	83	320	150	90	/	75	70	60	1"	1/2"	3/4"
SCF80-48	30-180	5-12	83	480	310	90	365	75	70	60	1"	1/2"	3/4"
SCF80-69	30-180	7.5-18	83	690	500	90	560	75	70	60	1"	1/2"	3/4"
SCF80-100	30-180	10-22	83	1000	805	90	865	75	70	60	1"	1/2"	3/4"
SCF130-52	60-250	15-34	133	525	280	110	/	110	105	100	1 1/2"	1"	1 1/2"
SCF130-73	60-250	20-39	133	730	490	110	565	110	105	100	1 1/2"	1"	1 1/2"
SCF130-103	60-250	22-60	133	1030	795	110	870	110	105	100	1 1/2"	1"	1 1/2"
SCF168-76	70-600	22-58	168	765	470	145	570	130	98	120	2"	1 1/2"	2"
SCF168-138	70-600	34-100	168	1380	1080	145	1180	110	98	120	2"	1 1/2"	2"
SCF219-80	80-900	36-86	219	800	435	175	400	180	140	180	3"	2"	3"
SCF219-109	80-900	52-127	219	1090	740	175	600	180	140	180	3"	2"	3"
SCF219-170	80-900	90-231	219	1700	1350	175	1000	180	140	180	3"	2"	3"